

Dial Indicators / Group 3 *Inch*



3571

Specifications

Inch-ANSI Standard (Stem Diameter 3/8")

Graduation	Total Range	Order No.	Range Per Rev.	Dial Reading	Accuracy 2-1/3 Rev.	Accuracy Total Range	Features
.0001"	.025"	3802-10	.01"	0-10	±.0001"	±.0002"	
		3803-10	.01"	0-5-0	±.0001"	±.0002"	
.0005"	.075"	3570	.03"	0-30	±.0005"	±.0005"	
		3571-10	.03"	0-15-0	±.0005"	±.0005"	
.001"	.125"	3780	.05"	0-50	±.001"	±.001"	
		3781	.05"	0-25-0	±.001"	±.001"	
	.25"	3410	.1"	0-100	±.001"	±.001"	
		3411	.1"	0-50-0	±.001"	±.001"	
	.4"	3412	.1"	0-100	±.001"	±.001"	
		3413	.1"	0-50-0	±.001"	±.001"	
	1"	3416	.1"	0-100	±.001"	±.002"	
		3417	.1"	0-50-0	±.001"	±.002"	
	2"	3424-10	.1"	0-100	±.001"	±.003"	
	3"	3426-10	.1"	0-100	±.001"	±.005"	
	4"	3428-10	.1"	0-100	±.001"	±.005"	

The measuring force for all of the above indicators is 1.5N or less, except for the following: **3424-10**; 2.1N or less: **3426-10**; 3.0N or less: **3428-10**; 4.0N or less.

The conversion factor between Newton force and gram force is 1N=101.94gf.

Lug back is standard; for flat-back version add 'B' to the order number, e.g. **3802B-10**.

High Precision Type	Reverse Reading	Balanced Dial	Continuous Dial	One Revolution
Damper at Lowest Rest Point	Shockproof	Adjustable Hand	Waterproof	Double Scale Spacing
Coaxial Revolution Counter	Peak Retaining	Long Stem	Dustproof	Jeweled Low Force

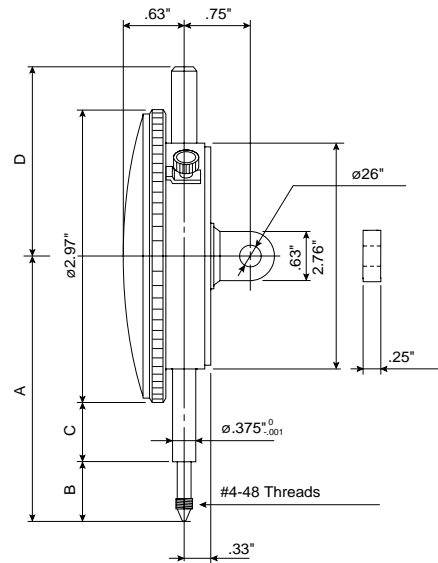
DIAL INDICATORS/INCH

Dial Indicators / Group 3 Inch

Dimensions

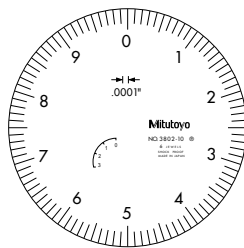
Order No.	A	B	C	D
3802-10	2.28"	.32"	.59"	2.14"
3803-10	2.28"	.32"	.59"	2.14"
3570	2.32"	.36"	.59"	2.14"
3571	2.32"	.36"	.59"	2.14"
3780	2.39"	.42"	.48"	2.14"
3781	2.39"	.42"	.48"	2.14"
3410	2.56"	.77"	.59"	2.14"
3411	2.56"	.77"	.59"	2.14"
3412	2.72"	.75"	.59"	2.14"
3413	2.72"	.75"	.59"	2.14"
3416*	3.30"	1.33"	.59"	1.83"
3417*	3.30"	1.33"	.59"	1.83"
3424-10	5.79"	2.30"	2.01"	5.04"
3426-10	7.32"	3.41"	2.43"	6.57"
3428-10	9.33"	4.42"	3.43"	8.03"

*Denotes the indicator does not feature a cap (dimension 'D' is taken to the screw top, which rises with the spindle).

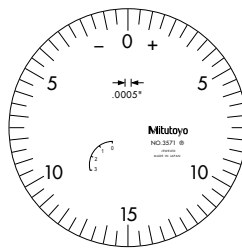


Dial Indicator Faces

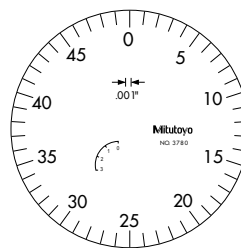
Group 3 – Inch



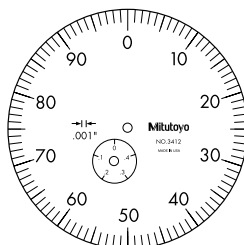
3802-10



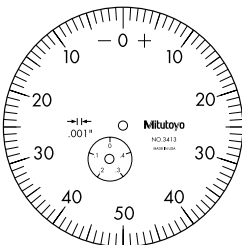
3571



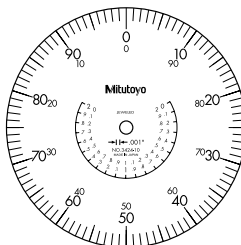
3780



3412



3413



3424-10

DIAL INDICATORS/METRIC

Dial Indicators / Group 3 *Metric*



3010-11

Specifications

Metric-ANSI Standard (Stem Diameter 3/8" with yellow dial face)

Graduation	Total Range	Order No.	Range Per Rev.	Dial Reading	Accuracy 2-1/3 Rev.	Total Range	Features
0.002mm	0.5mm	3010-11	0.2mm	0-20	±0.002mm		High Precision Type, Damper at Lowest Rest Point, Coaxial Revolution Counter
		3011-11	0.2mm	0-10-0	±0.002mm		High Precision Type, Damper at Lowest Rest Point, Coaxial Revolution Counter
0.01mm	2.5mm	3230-01	1mm	0-100	±0.010mm		Damper at Lowest Rest Point
		3231-01	1mm	0-50-0	±0.010mm		Damper at Lowest Rest Point
	30mm	3052-01	1mm	0-100	±0.010mm	±0.025mm	Damper at Lowest Rest Point, Shockproof, Adjustable Hand, Waterproof, Double Scale Spacing
		3052-11	1mm	0-100	±0.010mm	±0.025mm	Damper at Lowest Rest Point, Shockproof, Adjustable Hand, Waterproof, Double Scale Spacing
50mm	50mm	3058-01	1mm	0-100	±0.015mm	±0.035mm	Damper at Lowest Rest Point, Shockproof, Adjustable Hand, Waterproof, Double Scale Spacing
		3058-11	1mm	0-100	±0.015mm	±0.035mm	Damper at Lowest Rest Point, Shockproof, Adjustable Hand, Waterproof, Double Scale Spacing

Metric-ISO/JIS Standard (Stem Diameter 8mm)

Graduation	Total Range	Order No.	Range Per Rev.	Dial Reading	Accuracy	Features
0.001mm	1mm	3109F	0.2mm	0-100-0	±0.006mm	Damper at Lowest Rest Point, Coaxial Revolution Counter
0.01mm	10mm	3046F	1mm	0-100	±0.015mm	Damper at Lowest Rest Point
		3047F	1mm	0-50-0	±0.015mm	Damper at Lowest Rest Point
	20mm	3050F	1mm	0-100	±0.020mm	Damper at Lowest Rest Point
	30mm	3052F	1mm	0-100	±0.025mm	Damper at Lowest Rest Point, Shockproof, Adjustable Hand, Waterproof, Double Scale Spacing
	50mm	3058F	1mm	0-100	±0.035mm	Damper at Lowest Rest Point, Shockproof, Adjustable Hand, Waterproof, Double Scale Spacing
	80mm	3060F	1mm	0-100	±0.045mm	Damper at Lowest Rest Point, Shockproof, Adjustable Hand, Waterproof, Double Scale Spacing
100mm	3062F	1mm	0-100	±0.050mm	Damper at Lowest Rest Point, Shockproof, Adjustable Hand, Waterproof, Double Scale Spacing	

The measuring force for all of the above indicators is 1.5N or less, except for: 3046F, 3047F; 1.4N or less, 3050F; 2.0 or less, 3052-01, 3052-11, 3052F; 2.2N or less, 3058-01, 3058-11, 3058F; 2.5N or less, 3060F; 2.7N or less, 3062F; 3.2N or less.

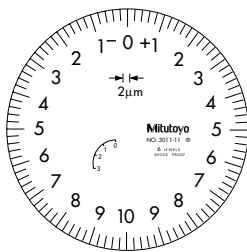
The conversion factor between Newton force and gram force is 1N=101.94gf.

Lug back is standard; for flat back version add 'B' to the order number, e.g. 3052FB.

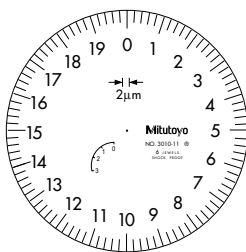
ISO/JIS type gages accuracy includes uncertainty k=2.

Dial Indicator Faces

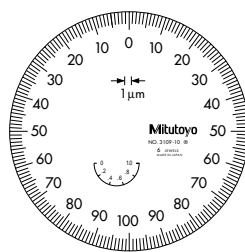
Group 3 – Metric



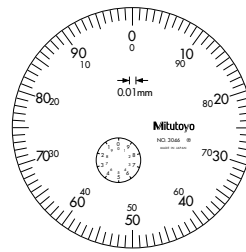
3011-11



3010-11



3109F



3046F

- | | | | | |
|-----------------------------|-----------------|-----------------|-----------------|----------------------|
| High Precision Type | Reverse Reading | Balanced Dial | Continuous Dial | One Revolution |
| Damper at Lowest Rest Point | Shockproof | Adjustable Hand | Waterproof | Double Scale Spacing |
| Coaxial Revolution Counter | Peak Retaining | Long Stem | Dustproof | Jeweled |
| | | | | Low Force |

DIAL INDICATORS/METRIC

Dial Indicators / Group 3 Metric

Dimensions

Metric ANSI Standard

Order No.	A	B	C	D
3010-11	2.28"	.31"	.48"	2.09"
3011-11	2.28"	.31"	.48"	2.09"
3230-01	2.35"	.39"	.48"	2.14"
3231-01	2.35"	.39"	.48"	2.14"
3052-01*	4.00"	1.46"	1.05"	2.85"
3052-11*	4.00"	1.46"	1.05"	2.85"
3058-01*	5.47"	2.23"	1.76"	3.20"
3058-11*	5.47"	2.23"	1.76"	3.20"

*Denotes the indicator does not feature a cap (dimension 'D' is taken to the screw top, which rises with the spindle).

ISO/JIS Metric Standard

Order No.	A	B	C	D	E
3046F	75.5	21	15.5	56	16.5
3047F	75.5	21	15.5	56	16.5
3109F	79	15	25	56	17

Unit: mm

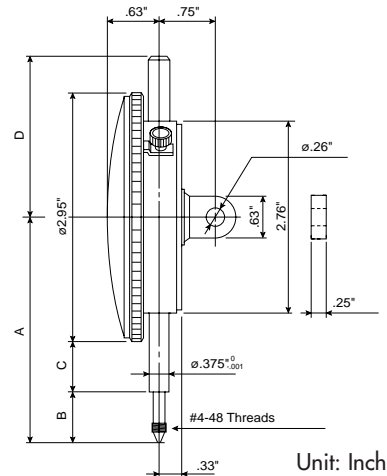
ISO/JIS Metric Standard

Order No.	A	B	C	D	E
3050F*	93	29	25	49	16.5
3052F*	104	40	25	73	17
3058F*	142	60	43	82	17
3060F*	203	91	73	112	17
3062F*	243	110	94	132	17

Unit: mm

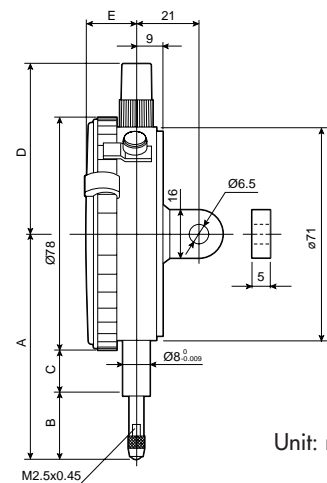
*Denotes the indicator does not feature a cap (dimension 'D' is taken to the screw top, which rises with the spindle).

Metric ANSI Standard



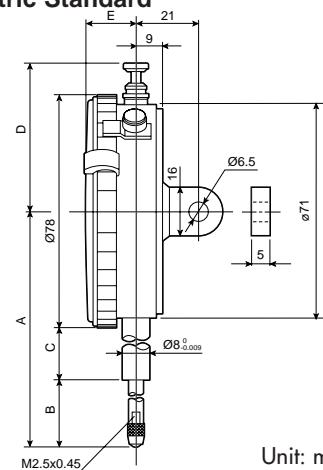
Unit: Inch

ISO/JIS Metric Standard



Unit: mm

ISO/JIS Metric Standard



Unit: mm